

Reusable Biopsy Forceps

Micro-Tech offers the high quality and reliable reusable biopsy forceps, coming with the different types and working length. The special jaws design is to ensure minimal channel damage during forceps insertion.

Performance Characteristics:

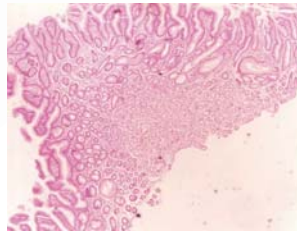
- Ergonomic design, excellent operation feeling.
- Sharp cutting performance to ensure clean-edged specimens.
- The shorter rigid part at the tip, easy to pass through the bended endoscope.



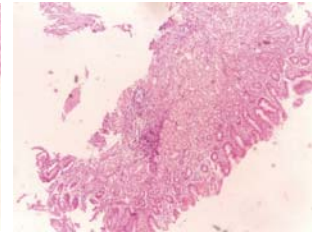
Biopsy removal



After biopsy removal



Biopsate removed with a toothed cutting edge



Biopsate removed with a smooth cutting edge

Specifications:

| REF | Jaw Diameter (mm) | Working Length (mm) | Spike | Covering | Min. working channel Ø |
|--------------|-------------------|---------------------|---------|----------|------------------------|
| RUBF023160-A | 2.3 | 1600 | without | without | 2.8 mm |
| RUBF023180-A | 2.3 | 1800 | without | without | 2.8 mm |
| RUBF023230-A | 2.3 | 2300 | without | without | 2.8 mm |
| RUBF023160-B | 2.3 | 1600 | with | without | 2.8 mm |
| RUBF023180-B | 2.3 | 1800 | with | without | 2.8 mm |
| RUBF023230-B | 2.3 | 2300 | with | without | 2.8 mm |